

A ORIGINAL RELEASE  
 1-19-88  
 S Running

# SPECIFICATIONS

CHARACTERISTICS	FREQUENCY (GHz)			
	.5-4	4-8	8-12.4	12.4-18
MAX. INS LOSS (dB)	2.0	2.2	2.7	3.0
MIN. ISOLATION (dB)	60	60	60	55
MAX. VSWR (on)	1.5	1.5	1.7	2.0

**Switching Speed:** (10% to 90% RF) 50 ns, Max.  
 (90% to 10% RF) 50 ns, Max.

**RF Power:** + 20 dBm, Max.

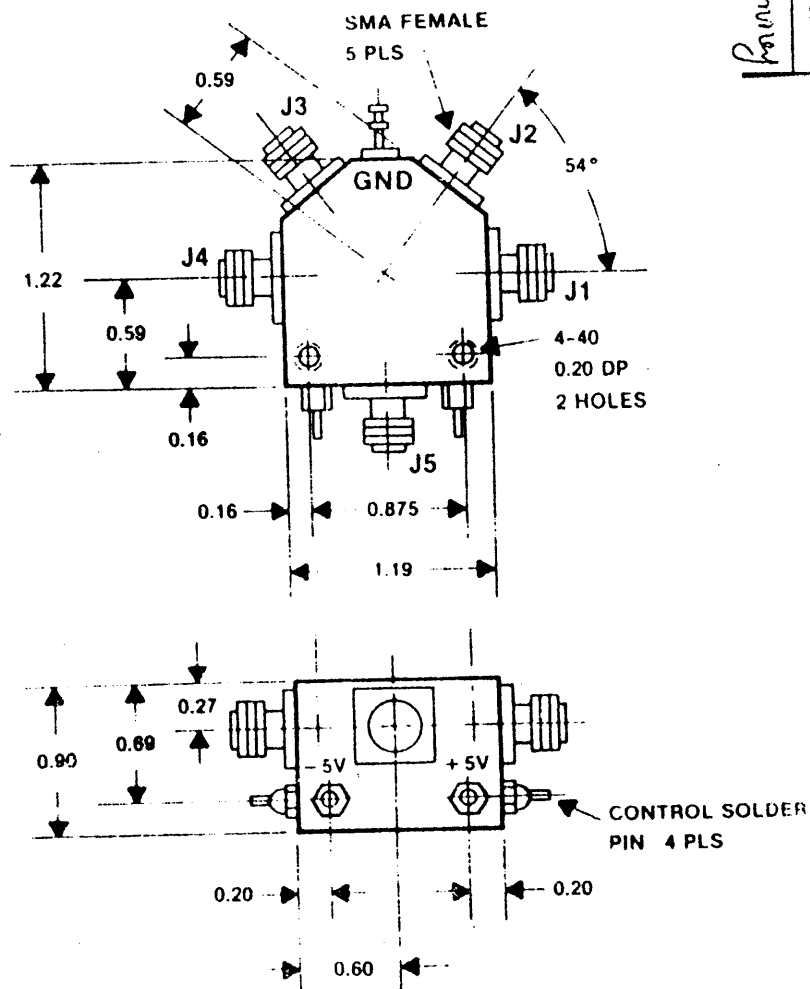
**Control:** TTL compatible, one "unit load"  
 4 individual controls

**Power Requirements:** +5V @ 200 mA, Max.  
 -5V @ 50 mA, Max.

**Connectors:** RF: SMA Female  
 Power: RFI Solder Pin  
 Control: Solder Pin

**Options:** 001 RF Male SMA Connectors

# MECHANICAL DATA



DRAWING NO.	AMERICAN	
	MICROWAVE CORPORATION	
DRAWING NO.	FREDERICK, MARYLAND 21701	
	OUTLINE AND SPECIFICATIONS	
CODE IDENT NO.	SW-2182-4A	
	.5 - 18 GHz	
SIZE	A	
	100-1582	

